

# ELTMaestro Client Installation



Version 10.0.3

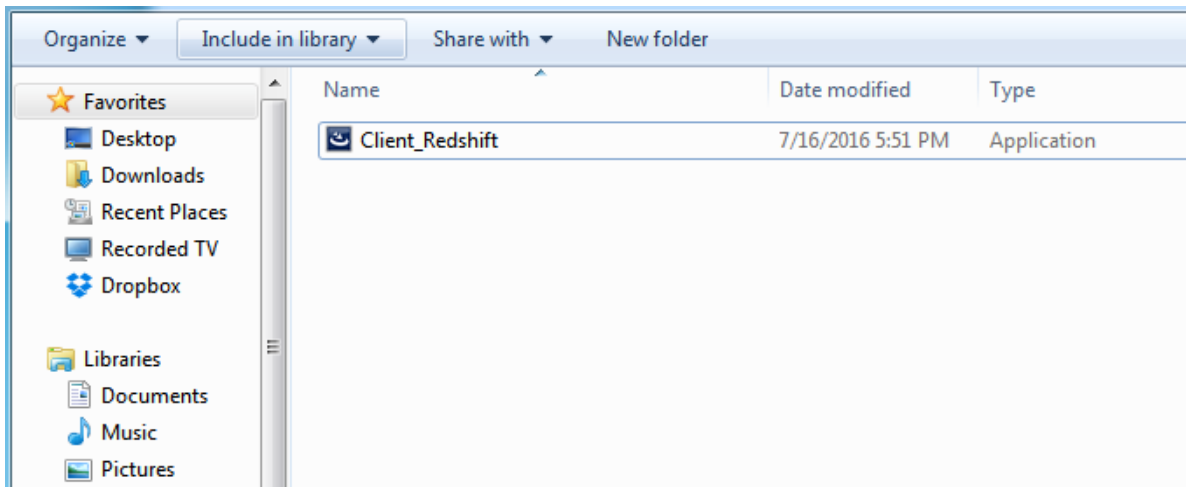
IQ Associates Inc.

## Introduction

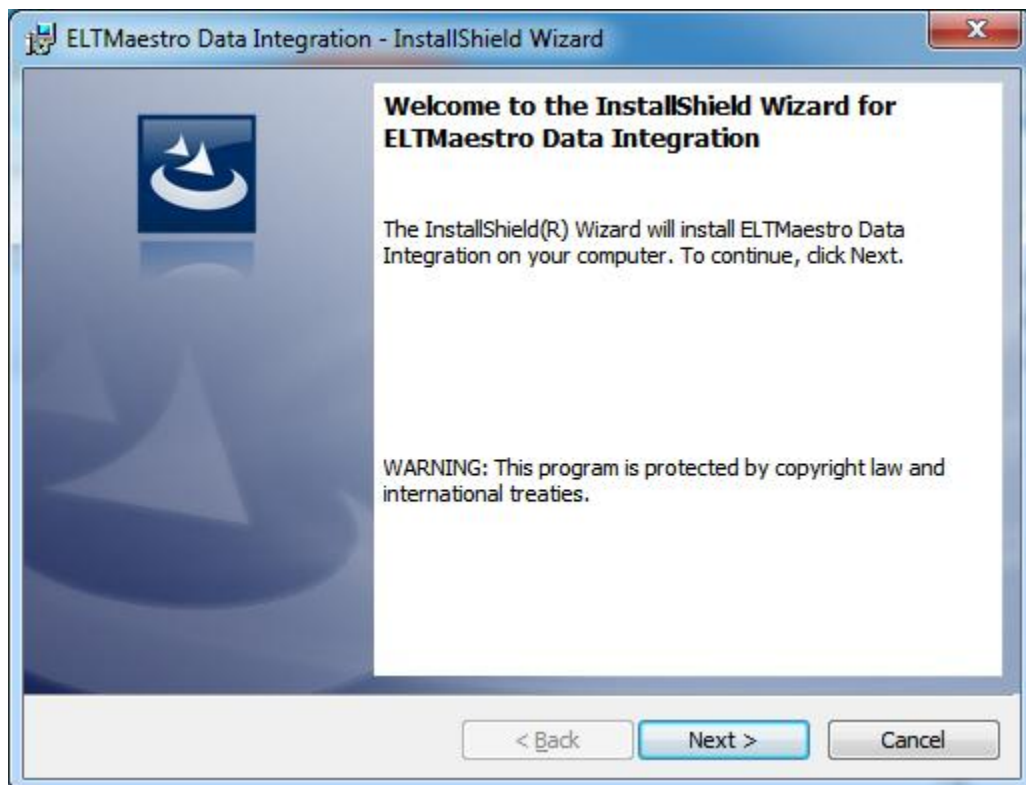
ELTMaestro is a tool that helps you do data integration and build data warehouses on powerful platforms such as IBM PureData for Analytics (Netezza), Amazon RedShift, and other systems. This manual covers the installation of ELTMaestro Client on local windows sytem.

## Installation Steps

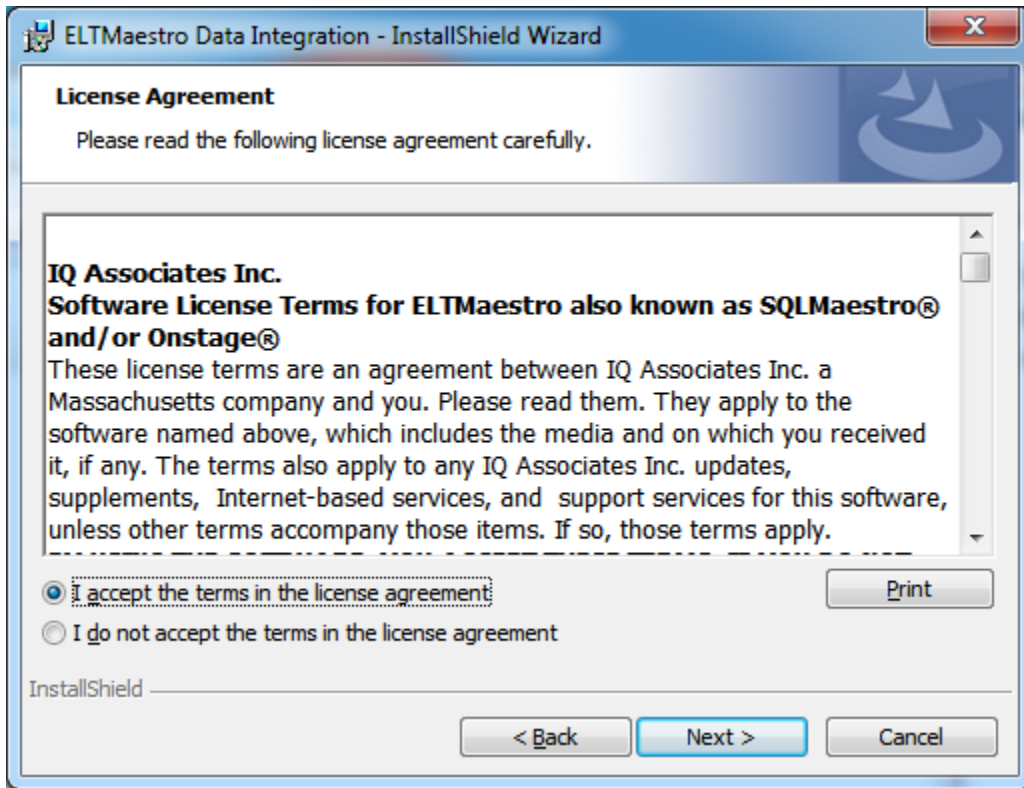
- Obtain a copy of ELTMaestro Design Studio Client.
- Run Client\_<YOUR PLATFORM\_NAME>.exe executable program.



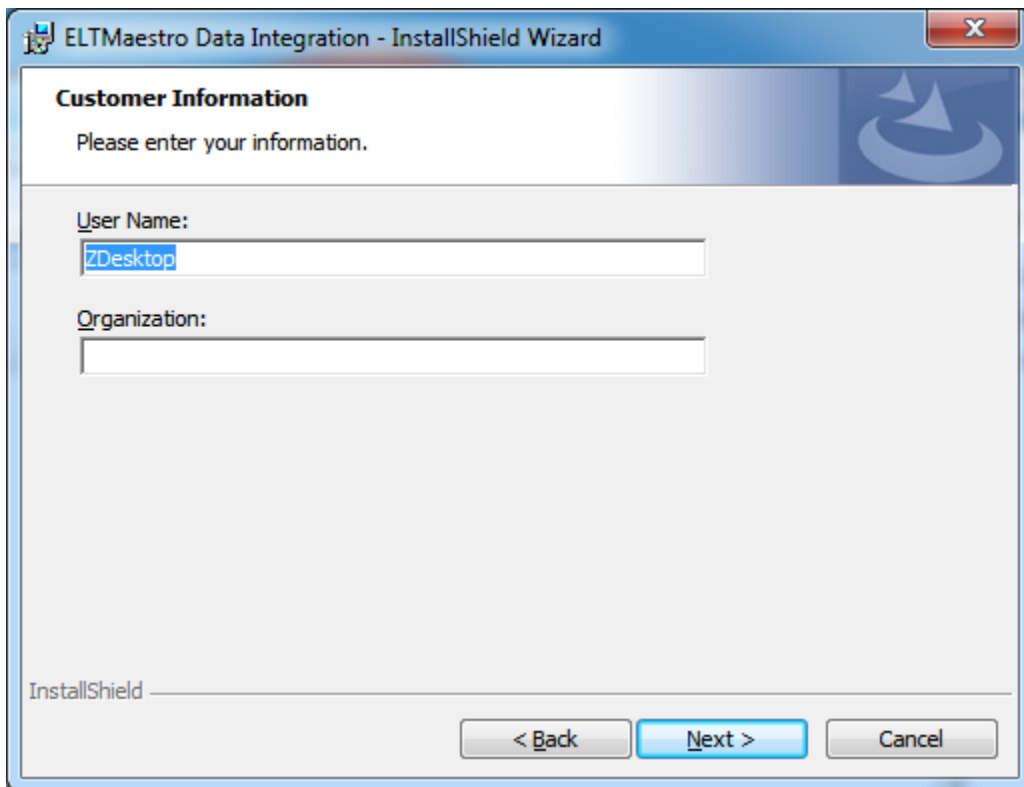
- Click [Next]



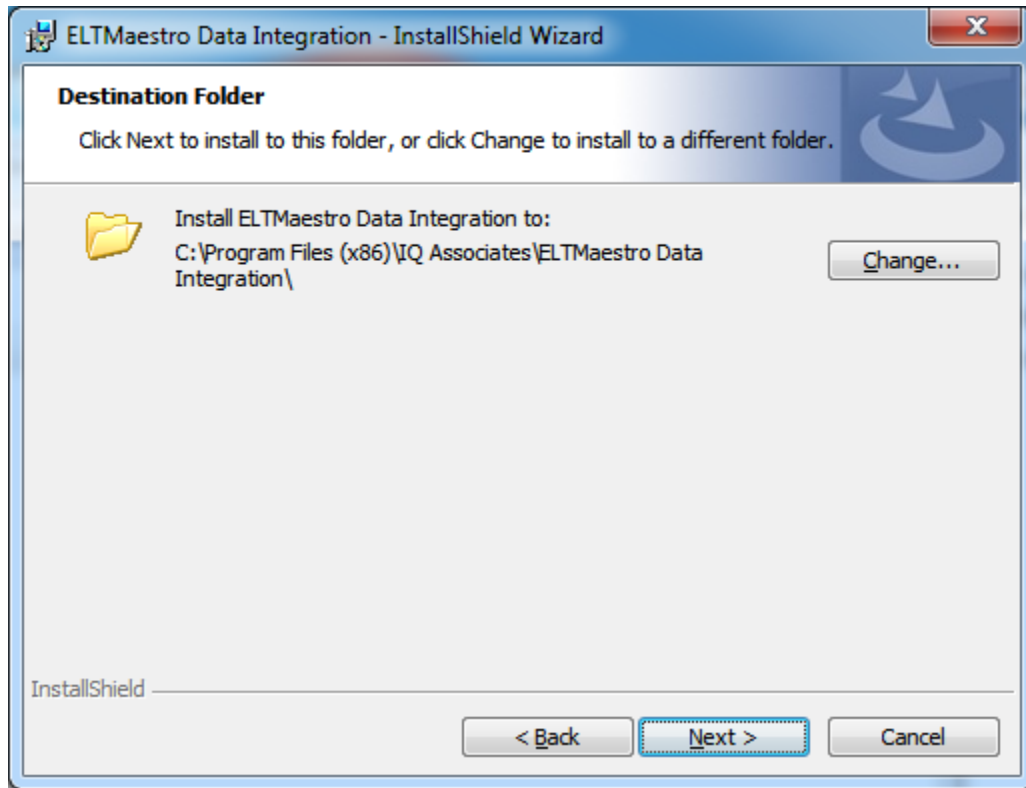
- Make sure you accept the terms by clicking I accept radio button. Then click [Next].



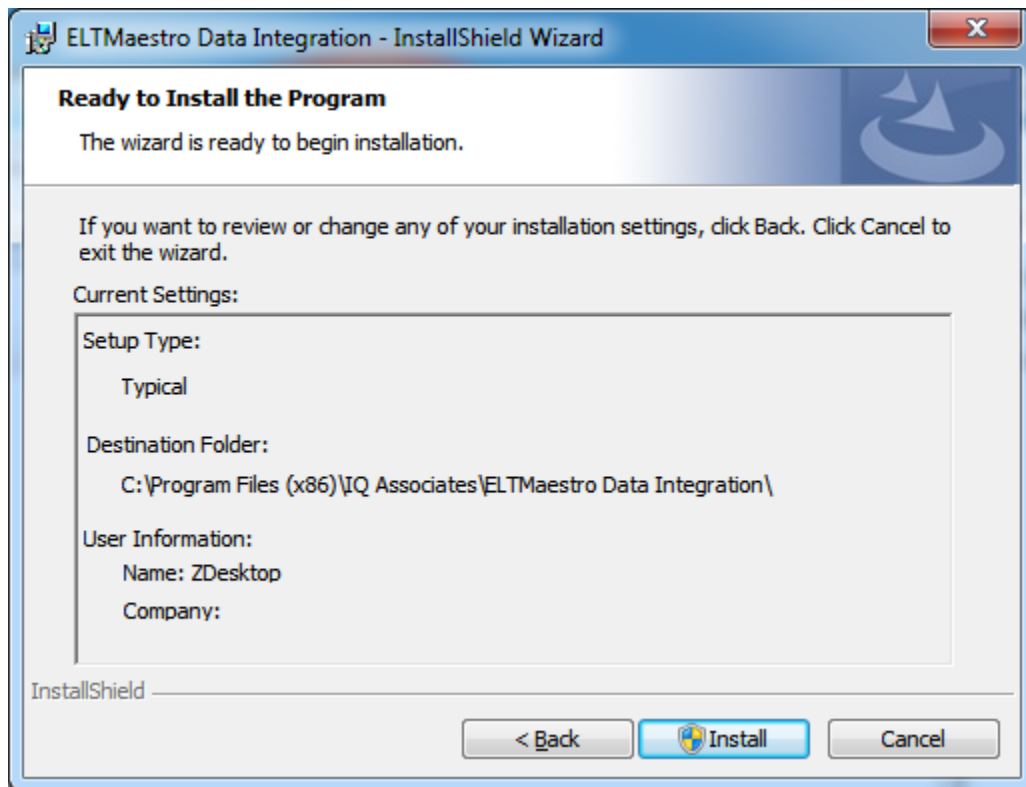
- Optionally add User Name and/or Organization. Then Click [Next]



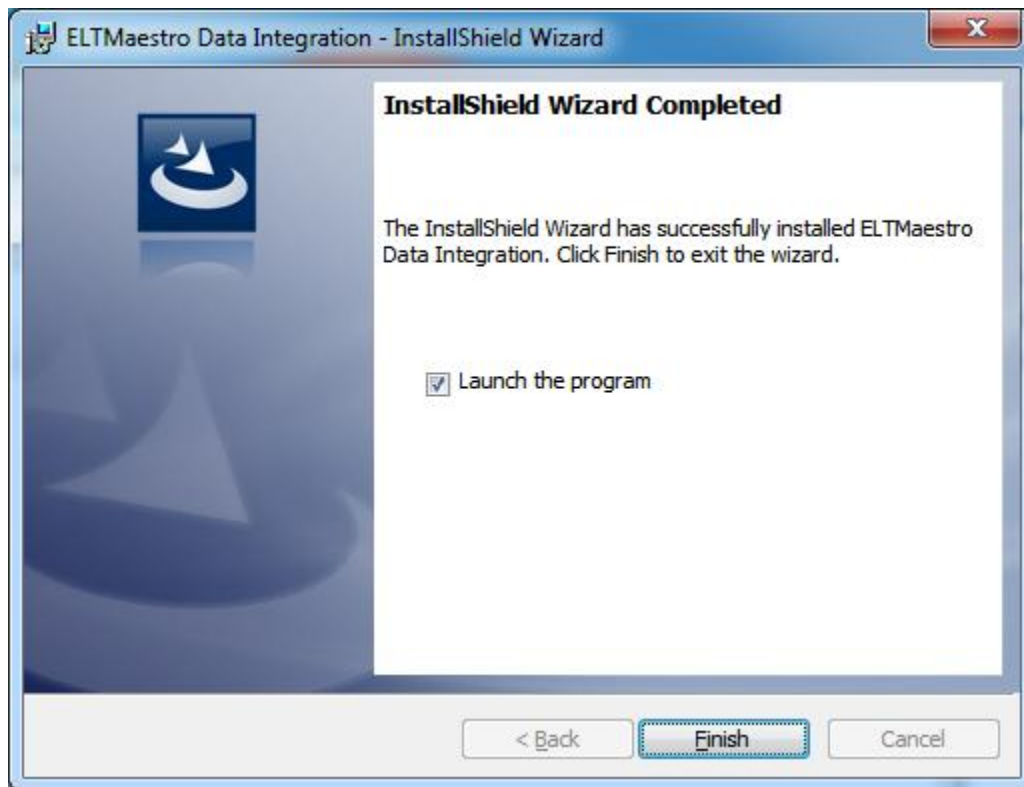
- Click [Next] to continue. You may also change default installation directory by clicking [Change]



- Click [Install]



- Click [Finish]



**Note** that for first time users the default credentials are as follows.

Server: ELTMaestro Server Host Name  
Port: 8181  
User Name: eltmaestro  
Password: ELTMAESTRO

**The default password for ELTMaestro EC2 instance is the EC2 Instance-ID.**

Please refer to Initial Configuration Guide for user administration(creating new users, changing passwords etc..)

## Updates/Upgrades

To update or upgrade ELTMaestro Client, uninstall existing client from Control Panel -> Programs. Then proceed with re-installation.

## Support:

[www.eltmaestro.com/support](http://www.eltmaestro.com/support)